

# Greek References

2010-2011



Note:

All used data within this analysis (raw data, pictures, graphs, etc.) is the property of:

DEGERenergie GmbH  
Solar Tracking Systems  
Industriestraße 70  
72160 Horb am Neckar  
[www.degerenergie.com](http://www.degerenergie.com)  
[info@DEGERenergie.com](mailto:info@DEGERenergie.com)

## Reference projects and a production overview from DEGERenergie



### Basic Installation data:

Solar plant identification: Gousios 19.80@ Megalohori  
 Location: Trikala  
 Country/Region: Greece  
 Longitude: 39°33'41" N  
 Latitude: 21°45'36" E

### System configuration:

Installed capacity: 19,8 kWp  
 Number of trackers: 18ut TOPtraker 8.5 (single-axis)  
 Number of modules: 90 modules  
 Number of inverters: 3ut Mini Central 7000TL

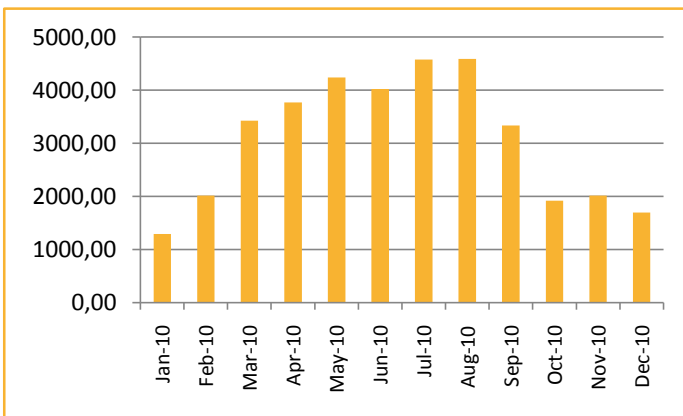
### Production period

January 2010 - December 2010

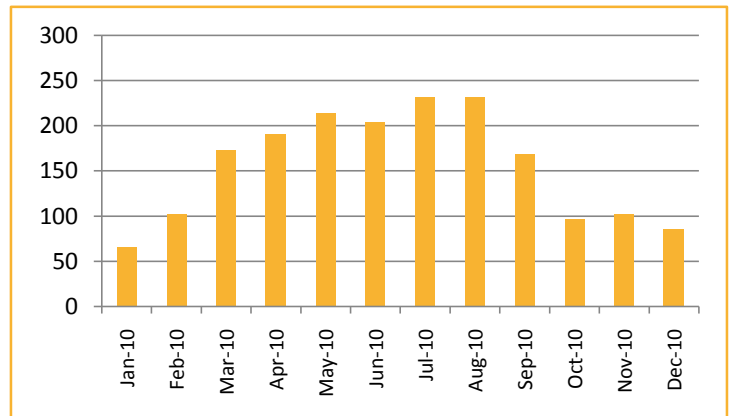
Month	kWh total	kWh/kWp
Jan-10	1293,06	65,31
Feb-10	2017,19	101,88
Mar-10	3428,37	173,15
Apr-10	3769,29	190,37
May-10	4241,65	214,22
Jun-10	4026,47	203,36
Jul-10	4577,67	231,20
Aug-10	4589,19	231,78
Sep-10	3338,02	168,59
Oct-10	1921,33	97,04
Nov-10	2018,12	101,93
Dec-10	1700,36	85,88
<b>TOTAL</b>	<b>36.921</b>	<b>1.865</b>



Trikala1: 19.80 kWp single axis



Total production: kWh



Production performance figure: kWh/kWp

Reference projects and a production overview from DEGERenergie



**Basic installation data:**

Solar plant identification: Pityrigkas @ Neohori No.2  
 Location: Trikala  
 Country/Region: Greece  
 Longitude: 39°33'41" N  
 Latitude: 21°45'36" E

**System configuration:**

Installed capacity: 19,80 kWp  
 Number of trackers: 3ut 7000NT (dual-axis)  
 Number of modules: aleo S\_18 (220 W)  
 Number of inverters: 3 Sunny Mini Central 7000TL

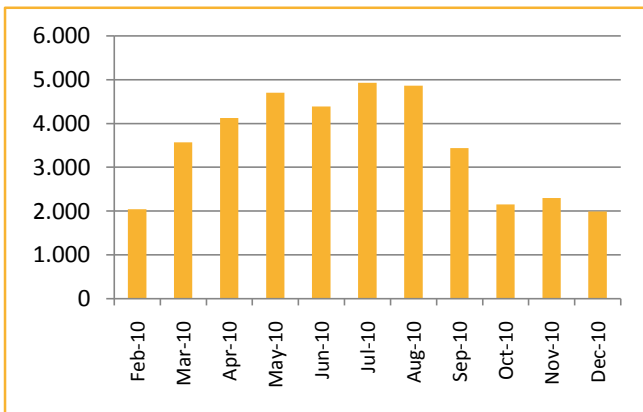
**Production period**

February 2010 - January 2011

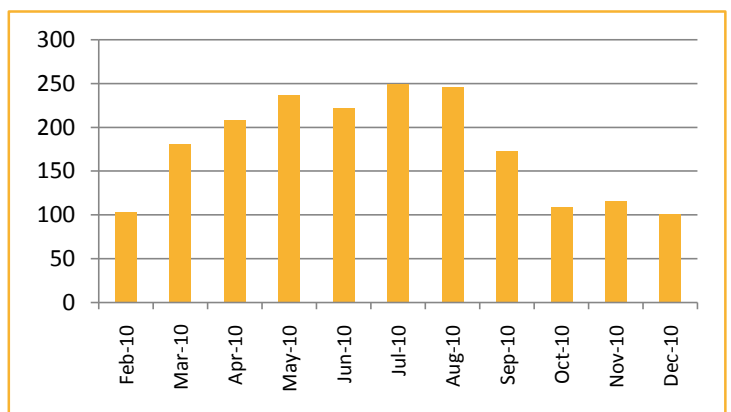
Month	kWh total	kWh/kWp	Fixed System kWh/kWp	Additional Yield
Feb-10	2.041	103,06	53,71	92%
Mar-10	3.568	180,18	84,36	114%
Apr-10	4.124	208,28	132,70	57%
May-10	4.696	237,17	150,67	57%
Jun-10	4.383	221,37	165,17	34%
Jul-10	4.926	248,79	161,47	54%
Aug-10	4.859	245,39	175,75	40%
Sep-10	3.432	173,35	172,80	0%
Oct-10	2.148	108,48	128,99	-16%
Nov-10	2.295	115,89	74,84	55%
Dec-10	1.991	100,54	81,89	23%
Jan-10	2.068	104,45	65,16	60%
<b>TOTAL</b>	<b>40.530</b>	<b>2.047</b>	<b>1.447,5</b>	<b>41%</b>



Trikala2: 19.80 kWp dual axis



Total production: kWh



Production performance figure: kWh/kWp

## Reference projects and a production overview from DEGERenergie



### Basic installation data:

Solar plant identification: 19,98kWp E. SARRI Oinofyta  
 Location: Oinofyta  
 Country/Region: Greece  
 Longitude: 37 ° 30' 48" N  
 Latitude: 22° 43' 51" E

### System configuration:

Installed capacity: 19,98 kWp  
 Number of trackers: 3 ut 7000NT  
 Number of modules: 108ut aleo 185Wp  
 Number of inverters: 3ut SMA 7000TL

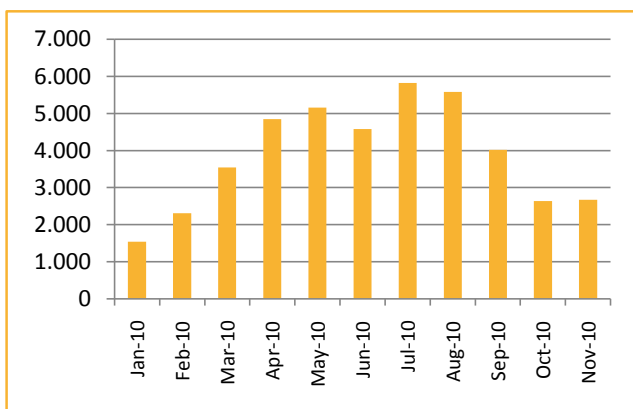
### Production period

January 2010 - December 2010

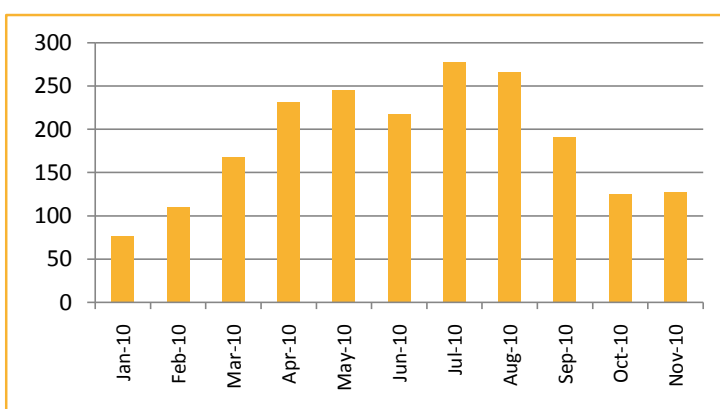
Month	kWh total	kWh/kWp	Fixed System kWh/kWp	Additional Yield
Jan-10	1.539	77,01	57,35	34%
Feb-10	2.308	110,04	87,52	26%
Mar-10	3.536	168,55	126,77	33%
Apr-10	4.846	231,01	159,63	45%
May-10	5.150	245,5	161,33	52%
Jun-10	4.575	218,1	141,50	54%
Jul-10	5.814	277,14	177,20	56%
Aug-10	5.580	265,96	173,26	54%
Sep-10	4.015	191,36	133,94	43%
Oct-10	2.635	125,58	93,13	35%
Nov-10	2.669	127,21	96,67	32%
Dec-10	1.856	88,46	66,07	34%
<b>TOTAL</b>	<b>44.523</b>	<b>2.126</b>	<b>1.474,4</b>	<b>44%</b>



Oinofyta 19.98kWp dual axis



Total production: kWh



Production performance figure: kWh/kWp

## Reference projects and a production overview from DEGERenergie



### Basic installation data:

Solar plant identification: KLT ENERGY (IASMOS - KAZAKOS)  
 Location: Komotini  
 Country/Region: Greece  
 Longitude: 41° 7' 2" N,  
 Latitude: 25° 24' 4" E

### System configuration:

Installed capacity: 99.88 kWp  
 Number of trackers: 15ut 7000NT  
 Number of modules: Sunways SM210U - 230wp  
 Number of inverters: 15 Sunny Mini Central 7000TL

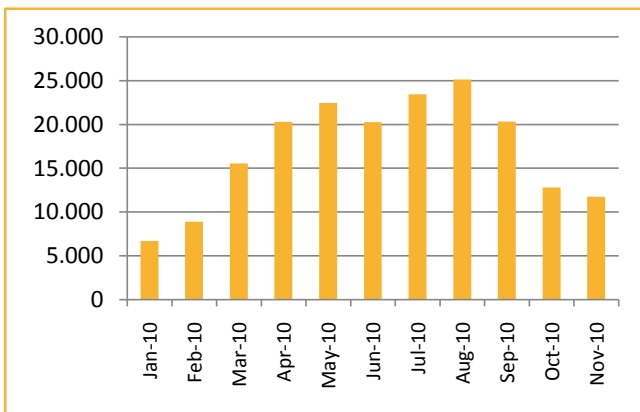
### Production period

January 2010 - December 2010

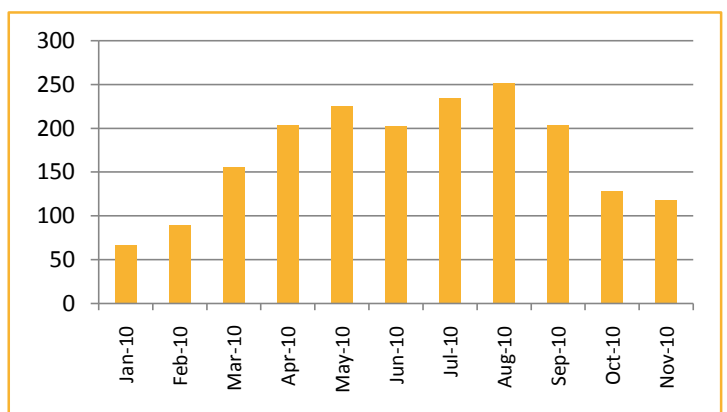
Month	kWh total	kWh/kWp	Fixed System kWh/kWp	Additional Yield
Jan-10	6.695	67,03	55,92	20%
Feb-10	8.884	88,95	78,55	13%
Mar-10	15.542	155,61	127,34	22%
Apr-10	20.282	203,06	156,46	30%
May-10	22.451	224,78	136,94	64%
Jun-10	20.261	202,86	150,78	35%
Jul-10	23.411	234,39	169,34	38%
Aug-10	25.098	251,29	174,49	44%
Sep-10	20.332	203,57	147,6	38%
Oct-10	12.783	127,99	99	29%
Nov-10	11.719	117,33	88,94	32%
Dec-10	7.510	75,19	57,41	31%
<b>TOTAL</b>	<b>194.971</b>	<b>1.952</b>	<b>1.442,8</b>	<b>35%</b>



Komotini Kazakos 99.88kWp (dual-axis)



Total production: kWh



Production performance figure: kWh/kWp



Reference projects and a production overview from DEGERenergie



**Basic installation data:**

Solar plant identification: HELIDA1 (K&M ENERGY)  
 Location: Molaoi Lakonias  
 Country/Region: Greece  
 Longitude: 36°48'16.23 N  
 Latitude: 22°48'59.30 E

**System configuration:**

Installed capacity: 99.68 kWp  
 Number of trackers: 20out 5000NT (dual axis)  
 Number of modules: N/A  
 Number of inverters: 20 Sunny Boy 5000TL

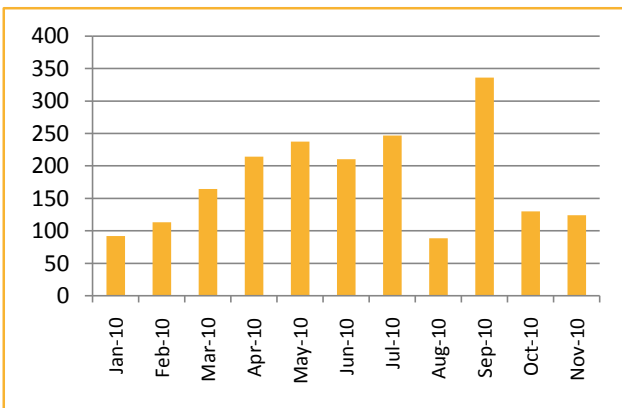
**Production period**

January 2010 - December 2010

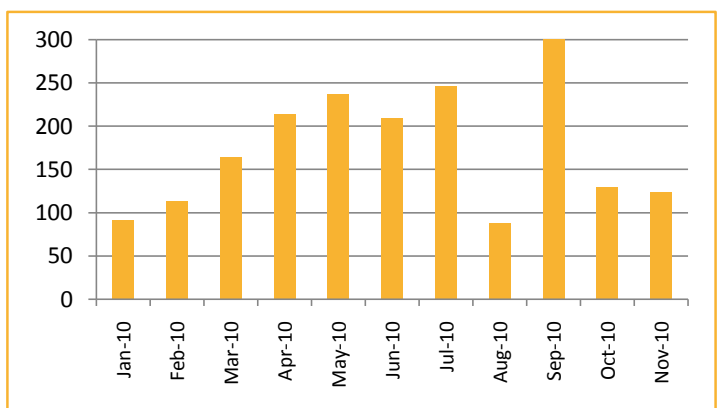
Month	kWh total	kWh/kWp	Fixed System kWh/kWp	Additional Yield
Jan-10	9.160	91,89	57,35	60%
Feb-10	11.263	112,99	87,52	29%
Mar-10	16.377	164,3	126,77	30%
Apr-10	21.319	213,87	159,63	34%
May-10	23.663	237,39	161,33	47%
Jun-10	20.934	210,01	141,50	48%
Jul-10	24.567	246,46	177,20	39%
Aug-10	8.782	88,1	173,26	-49%
Sep-10	33.480	335,87	133,94	151%
Oct-10	12.931	129,73	93,13	39%
Nov-10	12.337	123,77	96,67	28%
Dec-10	8.855	88,83	66,07	34%
<b>TOTAL</b>	<b>203.667</b>	<b>2.043</b>	<b>1.474,4</b>	<b>39%</b>



Helida1 99.68 kWp (dual axis)



Total production: kWh



Production performance figure: kWh/kWp